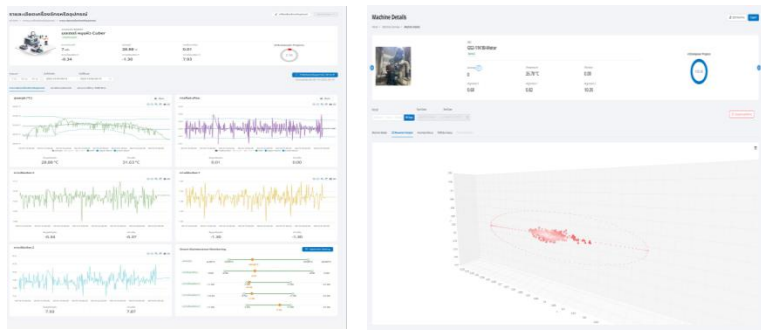


PdM Pro Specification



Brackets

Bracket **BWA-QM30-FTAL** is included with the aluminum sensor models. Bracket **BWA-QM30-FTSS** is included with the stainless steel models. All other brackets are available for order, but are not included with the sensor.

<p>BWA-QM30-FTSS</p> <ul style="list-style-type: none"> Use when measuring high frequency vibrations or when mounting the sensor to curved surfaces Includes SMBQM30 stainless steel bracket, four mounting screws, and one 1/4-28 x 1/2 screw mount 30 mm x 30 mm Refer to the Bracket Assembly Quick Start Guide for installation instructions (pin 213323) 	<p>BWA-QM30-FMSS</p> <ul style="list-style-type: none"> Includes magnetic mounting bracket SMBQM30 and four mounting screws (two sets of mounting screws for both the aluminum and stainless steel models) 30 mm x 30 mm Refer to the Bracket Assembly Quick Start Guide for installation instructions (pin 213323)
<p>BWA-QM30-FTAL</p> <ul style="list-style-type: none"> Use when measuring high frequency vibrations or when mounting the sensor to curved surfaces Includes SMBQM30 aluminum bracket, four mounting screws, one 1/4-28 x 1/2 screw mount, and one piece of 3M™ thermally conductive adhesive transfer tape 30 mm x 30 mm Refer to the Bracket Assembly Quick Start Guide for installation instructions (pin 213323) 	<p>BWA-QM30-CMAL</p> <ul style="list-style-type: none"> Magnet mount for curved surfaces 30 mm x 30 mm, 14.4 mm thick Includes four M2.5 x 16 mm socket head cap screws Refer to the Bracket Assembly Quick Start Guide for installation instructions (pin 213323)

Specification

Power:

Input Voltage: 24V DC, 0.1A

Cable:

Standard length: 10 meters

Optional lengths: 15 meters, 20 meters, 50 meters

Enclosure and Sensor:

Signal Transmission Box: IP65 rating

Sensor Probe: IP67–IP69 rating, depending on the model

Communication:

Wi-Fi: 2.4 GHz

Vibration Detection:

Detects dual-axis vibration up to 4 kHz bandwidth

Output actionable data including:

- RMS Velocity
- RMS High Frequency Acceleration
- Peak Velocity

Measurement Features:

High accuracy for both vibration and temperature measurements

Industrial-grade sensor with a small form factor for tight locations

Prob sensor: Stainless steel or aluminum depending on the model

Housing : ABS Plastic *Option Food Grade

Mounting Options:

The sensor can be mounted using various methods:

- M4 x 0.7 hex screw
- Epoxy
- Thermal tape
- Magnetic mount

Temperature Sensor Prob:

Measuring Range: -40°C to +105°C (-40°F to +221°F)

Resolution: 1°C

Accuracy: ± 3°C

Operating at higher voltages may cause internal heating, which can reduce accuracy