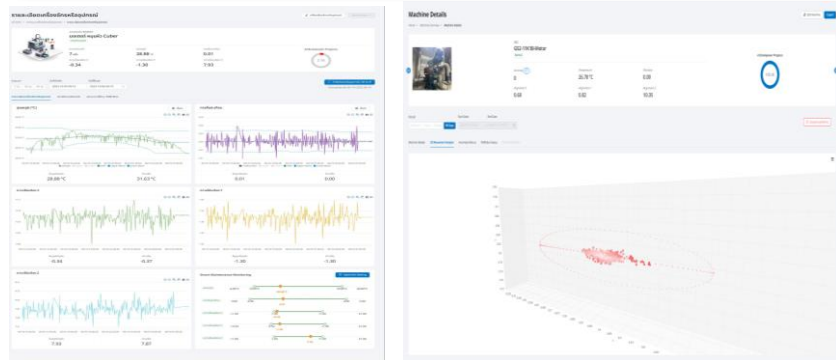


PdM Basic Specification



Specification

Power:

Input Voltage: 24V DC, 0.1A

Cable:

Standard length: 1 meters

Enclosure and Sensor:

IP65 *option model IP66 rating

Communication:

Wi-Fi: 2.4 GHz

Vibration Detection:

Detects vibration and alignment 3-axis

Measurement Features:

Vibration and temperature measurements

Industrial-grade sensor with a small form factor for tight locations

Housing : PVC Plastic

Mounting Options:

The sensor can be mounted using various methods:

- M4 × 0.7 hex screw
- Epoxy

Temperature Sensor Prob:

Measuring Range: -20°C to $+105^{\circ}\text{C}$ Resolution: 1°C K-Type

Accuracy: $\pm 3^{\circ}\text{C}$

Operating at higher voltages may cause internal heating, which can reduce accuracy